

# SOMOCER GROUP

Le LEADER Grès, Faïence, Sanitaire...



**GRÈS TECHNIQUE**  
TECHNICAL SANDSTONE

---

2021



**SOMOCER GROUP** créée en 1985, spécialisée dans la production et la commercialisation de carreaux céramique pour le revêtement mural et de sols (Faïence et grès porcelaine) et d'articles sanitaires (baignoire en fonte).

**SOMOCER GROUP** unit une tradition dans l'art de la céramique à un esprit vif et dynamique pour proposer sur le marché des collections raffinées, issues d'une recherche approfondie sur les tendances du marché et bénéficiant des dernières technologies.

Notre céramique se transforme en pierre, en bois ou en ciment. Nous offrons la céramique qui correspond à tous les goûts et pour tous les espaces, toujours avec une qualité absolue et un design exquis.

**SOMOCER GROUP** was founded in 1985, specializing in the production and sale of ceramic tiles for wall cladding and flooring (earthenware and porcelain stoneware) and sanitary ware (cast iron bathtub).

**SOMOCER GROUP** unites tradition in the art of ceramics in a lively and dynamic mind to offer the market refined collections, from a thorough research on market trends and with the latest technology.

Our ceramic is transformed to stone, wood or cement. We offer ceramic for all tastes and for all spaces, always with the best quality and exquisite design.

A close-up photograph of a green leaf, showing a dense network of veins. The central vein is the most prominent, with many smaller veins branching off it. The color is a vibrant green, with some lighter and darker shades depending on the lighting and the density of the veins.

**RESPECT DE L'ENVIRONNEMENT**  
ENVIRONMENTAL RESPECT

# SYSTÈME DE MANAGEMENT QUALITÉ CERTIFIÉ ISO 9001 VERSION 2015

QUALITY MANAGEMENT SYSTEM CERTIFIED  
ISO 9001 VERSION 2015

---

## LA GARANTIE DE QUALITÉ / QUALITY GUARANTEE

---

### SOMOCER GROUP

C'est chez **SOMOCER GROUP** où la nature rencontre la technologie, où on peut redécouvrir la couleur des idées, où on peut concevoir l'architecture du futur.

It is in **SOMOCER GROUP** where nature meets technology, where we can rediscover the color of ideas, where we can design the architecture of the future.

Le système de management de **SOMOCER GROUP** est certifié ISO 9001.

The **SOMOCER GROUP** management system is certified ISO 9001.

---



La société a évolué en prenant conscience de l'importance de prêter attention à l'environnement, ceci en tenant compte à chaque étape du processus de production du respect de l'environnement.

SOMOCER GROUP est engagée dans une démarche de progrès couvrant la qualité, l'environnement, la santé et la sécurité au travail basée sur le noyau solide que constitue son système de management intégré. La démarche de progrès démontre notre engagement primordial à satisfaire pleinement le client tout en soutenant la santé, la sécurité et le bien être de nos employés et en préservant l'environnement à travers l'amélioration continue de notre système et le respect strict de la réglementation.



The company has evolved into becoming aware of the importance of paying attention to the environment. In SOMOCER GROUP we are taking into account and respecting environment at every stage of production processes.

SOMOCER GROUP is committed to a progressive approach covering quality, environmental respect, health and safety based on the solid core of its integrated management system. This progressive approach demonstrates our primordial engagement to fully satisfy the customer while supporting the health, safety and welfare of our employees and protecting the environment through continuous improvement of our system and strict compliance.



# GRÈS TECHNIQUE

## TECHNICAL SANDSTONE

### DESCRIPTION DU GRÈS TECHNIQUE

SOMOCER offre un grès technique qui se caractérise par des performances techniques très poussées qui répondent tout à fait aux exigences techniques des grands projets. Sa résistance aux acides et bases est très recherchée par les laboratoires et les locaux commerciaux ou industriels.

Il est aussi parfaitement adapté aux exigences des espaces résidentiels et publics soumis à de très fréquents et intenses piétinements.

Le grès technique de SOMOCER est coloré par des micros granules de surface disponibles dans divers formats et coloris. Les épaisseurs majorées, les diverses finitions de surface et la grande résistance à l'usure permettent d'utiliser nos produits de grès technique sur les murs comme sur les sols, dans des environnements industriels, commerciaux et en extérieur.

Le grès technique de SOMOCER est un matériau compact, résistant et caractérisé par une porosité pratiquement nulle (inférieure à 0.2%). Les revêtements de sols et murs en grès technique sont antidérapants, résistants aux abrasions et au feu et conformes aux normes internationales.

### DESCRIPTION OF TECHNICAL SANDSTONE

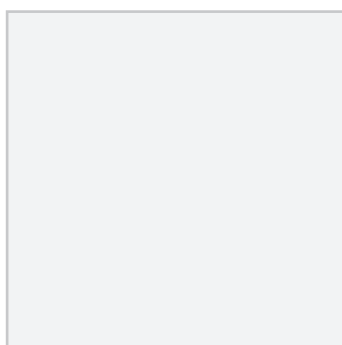
SOMOCER offers technical sandstone characterized by ultra-high technical performance that fully meets the technical requirements of large projects. Its resistance to acids and bases is in high demand by laboratories and commercial or industrial premises.

It is also perfectly adapted to the requirements of residential and public spaces subject to very frequent and intense trampling.

The technical sandstone of SOMOCER is colored by surface microgranules available in various formats and colors. The increased tile thickness, the various surface finishes and the high wear resistance allow to use our technical stoneware products on walls as well as on floors, in industrial, commercial and outdoor environments.

SOMOCER's technical sandstone is a compact, long-lasting material with very low porosity (less than 0.2%). Technical sandstone floors and walls are non-slip, abrasion and fire-resistant and comply with international standards.

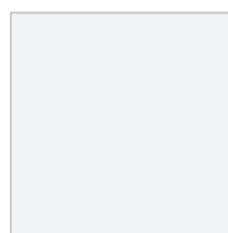
60 x 60



45 x 45



40 x 40



30 x 30



20 x 20



## SYMBOLES ET CARACTÉRISTIQUES / SYMBOLS & CHARACTERISTICS



Intérieur / Interior



Non Rectifié / Not Rectified



Extérieur / Exterior



Rectifié / Rectified



Lisse / Slick



Structuré / Structured



Poli / Polished



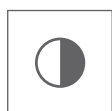
Granulés anti dérapant / Slip pellets



Brillant / Brilliant



Aspect uniforme / Uniform appearance



Mat / Matt



Légère variation / Slight variation



Sol / Floor



Variation modeste / Modest variation



Mural / Wall



Variation aléatoire / Random variation

# FORTE ÉPAISSEUR HIGH THICKNESS

30x30





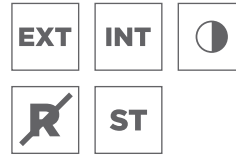


# FORTE ÉPAISSEUR HIGH THICKNESS | 30x30

**Apuane grain de riz**  
Format : 30cm x 30cm  
GAP316



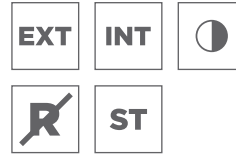
x5



**Apuane rond**  
Format : 30cm x 30cm  
GAP317



x5



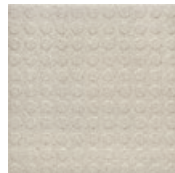
**Basalt grain de riz**  
Format : 30cm x 30cm  
GAP318



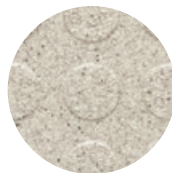
x5



**Basalt rond**  
Format : 30cm x 30cm  
GAP319



x5



**Basalt granulé**  
Format : 30cm x 30cm  
GAPG331



x5

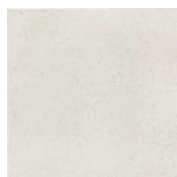


## Emballage / Packaging

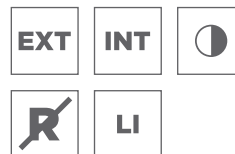
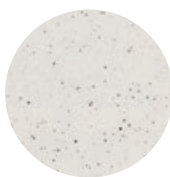
Emballage / Packaging		CARTON / BOX			PALETTE / PALLET		
		PC / Cart PCS / Box	M <sup>2</sup> / Cart SQM / Box	Poids / Cart Weight / Box	Cart / Pal Box / Pallet	M <sup>2</sup> / Pal SQM / Pallet	Poids / Pal Weight / Pallet
Format / Size	Epaisseur / Thickness	10	0,9 m <sup>2</sup>	20 kg	42	37,8 m <sup>2</sup>	860 kg
30 x 30	12 mm						



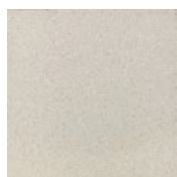
**Apuane lisse**  
Format : 30cm x 30cm  
GAP300



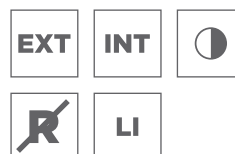
x5



**Basalt lisse**  
Format : 30cm x 30cm  
GAP301



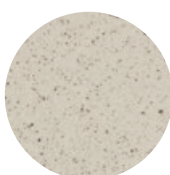
x5



**Coco lisse**  
Format : 30cm x 30cm  
GAP305



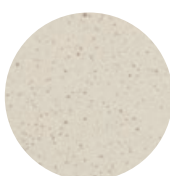
x5



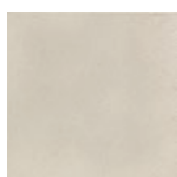
**Garda lisse**  
Format : 30cm x 30cm  
GAP325



x5



**Cortina lisse**  
Format : 30cm x 30cm  
GAP320



x5



**SEL ET POIVRE**  
**SALT AND PEPPER**  
20x20





### Grès base ivoire lisse

Format : 20cm x 20cm  
GEP211



x5



### Grès base ivoire lisse 16 Pastilles

Format : 20cm x 20cm  
GEP212

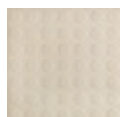


x5

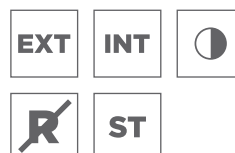


### Grès base ivoire lisse 49 R 8.6

Format : 20cm x 20cm  
GEP215



x5



### Emballage / Packaging

Format / Size		CARTON / BOX			PALETTE / PALLET		
		PC / Cart PCS / Box	M <sup>2</sup> / Cart SQM / Box	Poids / Cart Weight / Box	Cart / Pal Box / Pallet	M <sup>2</sup> / Pal SQM / Pallet	Poids / Pal Weight / Pallet
20 x 20	8,3 mm	25	1,00 m <sup>2</sup>	17,8 kg	80	80,00 m <sup>2</sup>	1440 kg

**SEL ET POIVRE**  
**SALT AND PEPPER**  
40x40 / 60x60

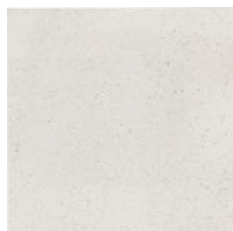




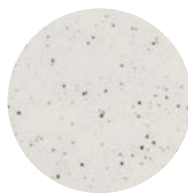
# SEL ET POIVRE SALT AND PEPPER | 40x40

## Apuane

Format : 40cm x 40cm  
GEP400

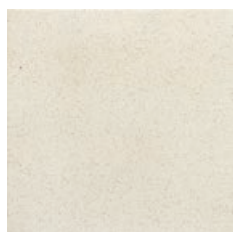


x5 ▶

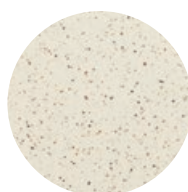


## Coco beige

Format : 40cm x 40cm  
GEP405

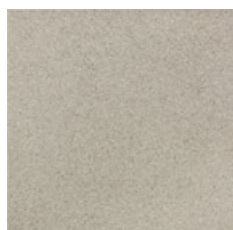


x5 ▶

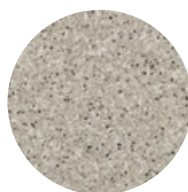


## Basalt

Format : 40cm x 40cm  
GEP401

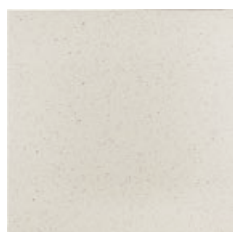


x5 ▶

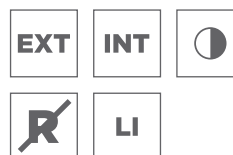
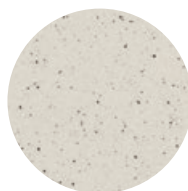


## Cortina

Format : 40cm x 40cm  
GEP420

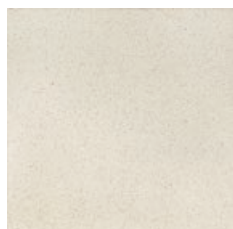


x5 ▶

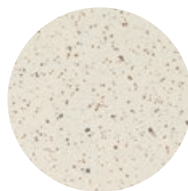


## Garda

Format : 40cm x 40cm  
GEP425



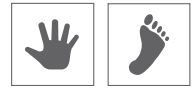
x5 ▶



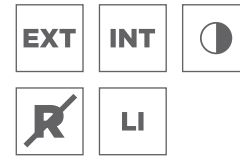
### Emballage / Packaging

Format / Size		CARTON / BOX			PALETTE / PALLET		
		PC / Cart PCS / Box	M <sup>2</sup> / Cart SQM / Box	Poids / Cart Weight / Box	Cart / Pal Box / Pallet	M <sup>2</sup> / Pal SQM / Pallet	Poids / Pal Weight / Pallet
40 x 40	8,3 mm	8	1,28 m <sup>2</sup>	23,7 kg	60	76,8 m <sup>2</sup>	1442 kg





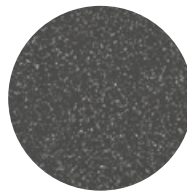
**Pompei**  
Format : 40cm x 40cm  
GEP421



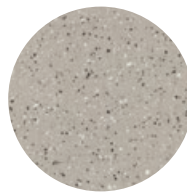
**Super blanc**  
Format : 40cm x 40cm  
GEP410



**Nice**  
Format : 40cm x 40cm  
GEP413



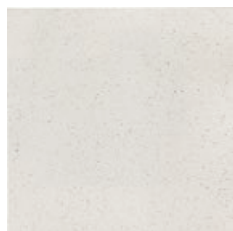
**Daulphin**  
Format : 40cm x 40cm  
GEP412



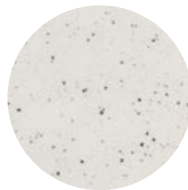
# SEL ET POIVRE SALT AND PEPPER | 40x40

## Apuane

Format : 39,55cm x 39,55cm  
GEPP400



x5

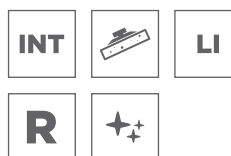
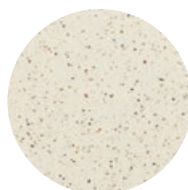


## Coco beige

Format : 39,55cm x 39,55cm  
GEPP405



x5

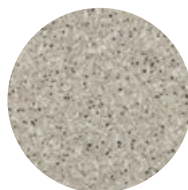


## Basalt

Format : 39,55cm x 39,55cm  
GEPP401

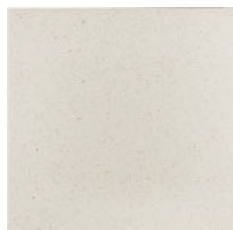


x5

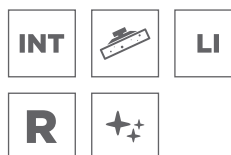
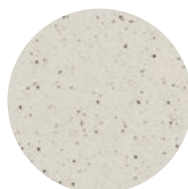


## Cortina

Format : 39,55cm x 39,55cm  
GEPP420



x5

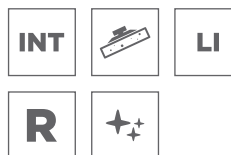
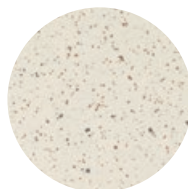


## Garda

Format : 39,55cm x 39,55cm  
GEPP425



x5



20

### Emballage / Packaging

Format / Size		CARTON / BOX			PALETTE / PALLET		
		PC / Cart PCS / Box	M <sup>2</sup> / Cart SQM / Box	Poids / Cart Weight / Box	Cart / Pal Box / Pallet	M <sup>2</sup> / Pal SQM / Pallet	Poids / Pal Weight / Pallet
39,55 x 39,55	8,5 mm	8	1,09 m <sup>2</sup>	20 kg	60	65,4 m <sup>2</sup>	1250 kg



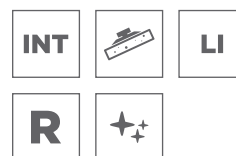
### Pompei

Format : 39,55cm x 39,55cm  
GEPP421



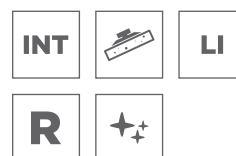
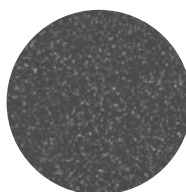
### Super blanc

Format : 39,55cm x 39,55cm  
GEPP410



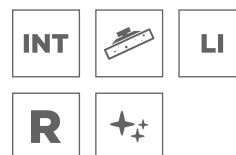
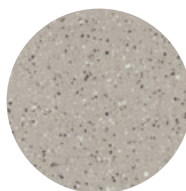
### Nice

Format : 39,55cm x 39,55cm  
GEPP413



### Daulphin

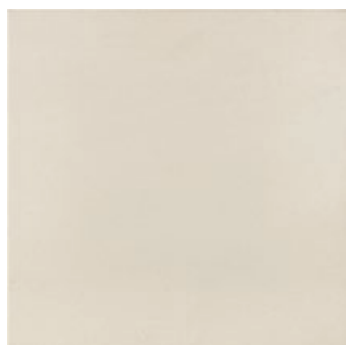
Format : 39,55cm x 39,55cm  
GEPP412



# SEL ET POIVRE SALT AND PEPPER | 60x60

## Super blanc

Format : 59,5cm x 59,5cm  
GEPP6610



x5



## Basalt

Format : 59,5cm x 59,5cm  
GEPP6601

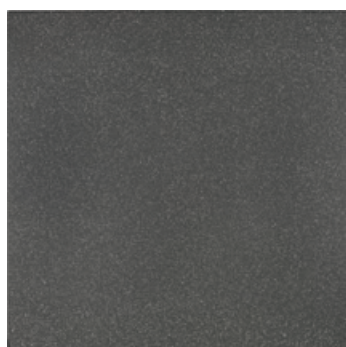


x5

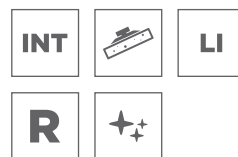
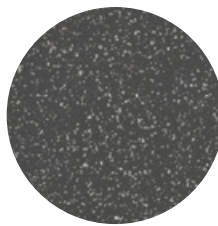


## Nice

Format : 59,5cm x 59,5cm  
GEPP6613



x5



### Emballage / Packaging

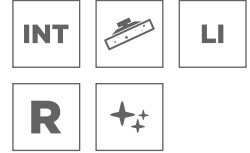
Format / Size	Epaisseur / Thickness	CARTON / BOX			PALETTE / PALLET		
		PC / Cart PCS / Box	M <sup>2</sup> / Cart SQM / Box	Poids / Cart Weight / Box	Cart / Pal Box / Pallet	M <sup>2</sup> / Pal SQM / Pallet	Poids / Pal Weight / Pallet
59,5 x 59,5	9,5 mm	3	1,06 m <sup>2</sup>	23,27 kg	36	38,16 m <sup>2</sup>	858 kg

### Pompei

Format : 59,5cm x 59,5cm  
GEPP6621



x5

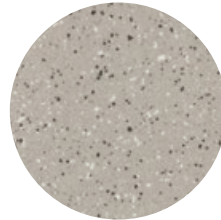


### Daulphin

Format : 59,5cm x 59,5cm  
GEPP6612



x5

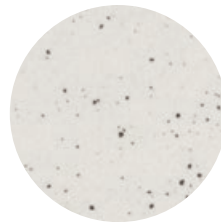


### Apuane mat

Format : 59,5cm x 59,5cm  
GEPP6600



x5



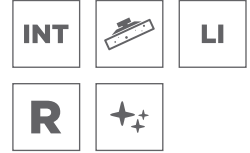
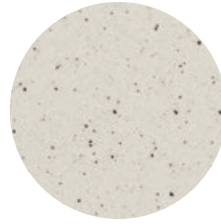
# SEL ET POIVRE SALT AND PEPPER | 60x60

## Cortina

Format : 59,5cm x 59,5cm  
GEPP6620



x5

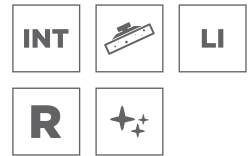
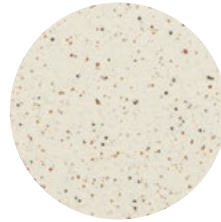


## Coco beige

Format : 59,5cm x 59,5cm  
GEPP6605



x5

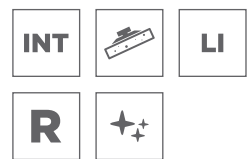
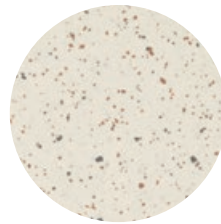


## Garda

Format : 59,5cm x 59,5cm  
GEPP6625

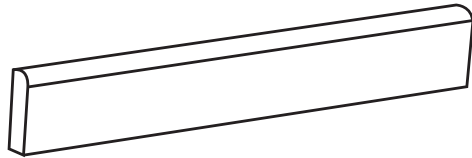


x5



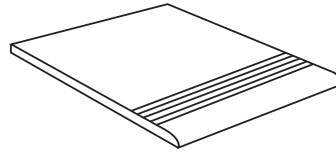
# PIÈCES SPÉCIALES SPECIAL PARTS

## PLINTHES / PLINTHS



Format / Size
9 x 40
9 x 60

## NEZ DE MARCHE / STAIR NOSING



Format / Size
40 x 40

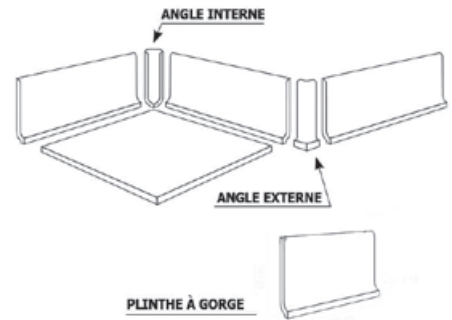
## ANGLES EXTERNES ET INTERNES EXTERNAL AND INTERNAL ANGLES

PLINTHE À GORGE

ANGLE

Format / Size
10,6 x 30

Format / Size
10,6 x 2,3



25



Plinthe à Gorge Apuane

Plinthe à Gorge Basalt



Angle Externe  
Apuane



Angle Interne  
Apuane



Angle Externe  
Basalt



Angle Interne  
Basalt

# DOUBLE CHARGEMENT DOUBLE LOADING

45x45 / 60x60







# DOUBLE CHARGEMENT DOUBLE LOADING | 45x45

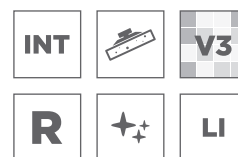
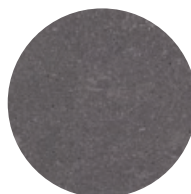


## Double chargement noir

Format : 44,5cm x 44,5cm  
GEDP4510



x5

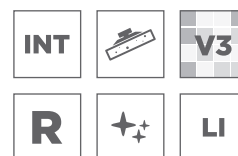
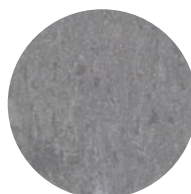


## Double chargement bleu gris

Format : 44,5cm x 44,5cm  
GEDP4511

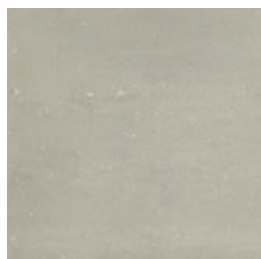


x5

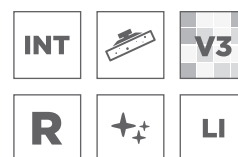
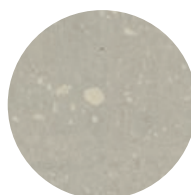


## Double chargement gris vert

Format : 44,5cm x 44,5cm  
GEDP4532



x5

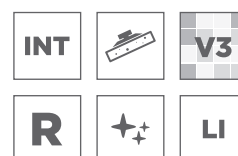


## Millenium gris

Format : 44,5cm x 44,5cm  
GEDP4515



x5

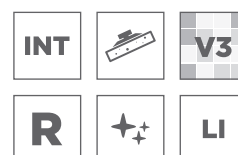


## Double chargement gris poli

Format : 44,5cm x 44,5cm  
GEDP4514



x5



### Emballage / Packaging

Format / Size	Epaisseur / Thickness	CARTON / BOX			PALETTE / PALLET		
		PC / Cart PCS / Box	M <sup>2</sup> / Cart SQM / Box	Poids / Cart Weight / Box	Cart / Pal Box / Pallet	M <sup>2</sup> / Pal SQM / Pallet	Poids / Pal Weight / Pallet
44,5 x 44,5	9,4 mm	7	1,38m <sup>2</sup>	26,8 kg	54	74,52m <sup>2</sup>	1469 kg



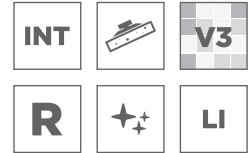
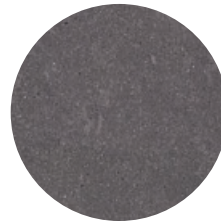
# DOUBLE CHARGEMENT DOUBLE LOADING | 60x60

## Double chargement noir

Format : 59,5cm x 59,5cm  
GEDP6515



x5

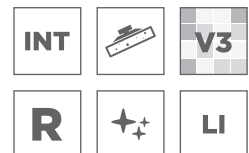
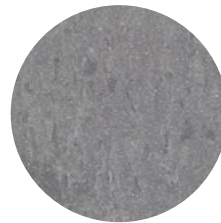


## Double chargement bleu gris

Format : 59,5cm x 59,5cm  
GEDP6521



x5

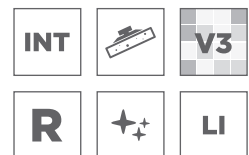
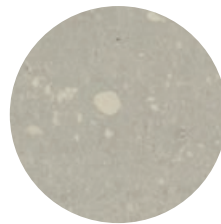


## Double chargement gris vert

Format : 59,5cm x 59,5cm  
GEDP6512



x5



### Emballage / Packaging

Format / Size	Epaisseur / Thickness	CARTON / BOX			PALETTE / PALLET		
		PC / Cart PCS / Box	M <sup>2</sup> / Cart SQM / Box	Poids / Cart Weight / Box	Cart / Pal Box / Pallet	M <sup>2</sup> / Pal SQM / Pallet	Poids / Pal Weight / Pallet
59,5 x 59,5	9,5 mm	3	1,06 m <sup>2</sup>	23,27 kg	36	38,16 m <sup>2</sup>	858 kg

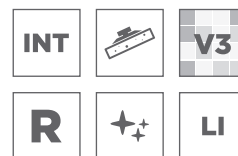


### Mellinium blanc gris

Format : 59,5cm x 59,5cm  
GEDP6520

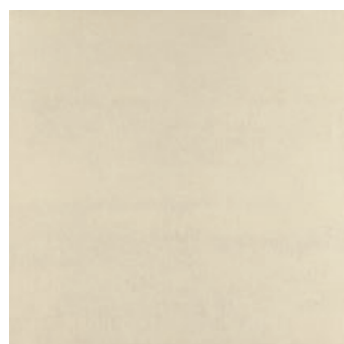


 x5 ▶

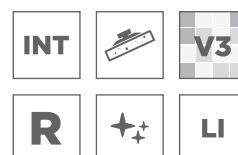


### Double chargement gris

Format : 59,5cm x 59,5cm  
GEDP6514












 x5 ▶













# FORTE ÉPAISSEUR HIGH THICKNESS

## CARACTÉRISTIQUES TECHNIQUES DE PRODUITS DU GRÈS NON ÉMAILLÉ (groupe Bla) ANNEXE G TECHNICAL DATA SHEET FOR UNGLAZED FLOOR TILE (GROUPE / GROUP Bla)

<b>Séries / Series : Grès GAP</b>		<b>Classe : U4P4+E3C2</b>		<b>Émaillé (GL)</b> Glazed (GL)	<b>Non émaillé (UGL)</b> Unglazed (UGL) 0
<b>Format / Format : 30x30</b>			<b>Format / Nominal thickness : 12,0 mm</b>		
<b>Propriété Physicochimiques</b> Physicochemical Properties		<b>Essais selon norme applicable</b> Tests according to applicable standard	<b>Valeur de la norme NF EN -14411</b> Standard Value NF EN -14411	<b>Valeur Moyenne de SOMOCER</b> Average Value of SOMOCER	
DIMENSIONS ET QUALITÉ DE SURFACE					
<b>Masse d'eau absorbée</b> Water Absorption (%)		ISO 10545-3	Bl <sub>a</sub> E ≤ 0,5%	E ≤ 0,2%	
<b>Dimensions</b> Dimensions		ISO 10545-2	Épaisseur ± 5%, max. 0,5mm	±3%	
			Longueur et largeur ± 0,6%, max 2,0mm	±0,3%	
			Rectitude des arrêtes ±0,5%, ±1,5mm	±0,3%	
			Angulativité ±0,5%, ±2,0mm	±0,3%	
			Courbature centrale ±0,5%, ±2,0mm	±0,3%	
			Courbature latérale ±0,5%, ±2,0mm	±0,3%	
			Voile (angle haut - angle bas) ±0,5%, ±2,0mm	±0,3%	
<b>Aspect de surface</b> Surface quality		ISO 10545-2	<b>95% min. exemptée par défauts</b> Exempted by default	<b>Conforme</b> Compliant	
<b>Charge de rupture (N)</b> Breaking strength (N)		ISO 10545-4	> 1300N ; > 35N/mm <sup>2</sup>	> 3200N ; > 40 N/mm <sup>2</sup>	
<b>Résistance à la flexion (N/mm<sup>2</sup>)</b> Bending strength (N/mm <sup>2</sup> )					
<b>Résistance à l'abrasion profonde</b> Resistance to deep abrasion		ISO 10545-6	Max 175 mm <sup>3</sup>	L ≤ 32 mm, V ≤ 67 mm <sup>3</sup> CLASSE U4	
<b>Résistance au gel</b> Frost resistance		ISO 10545-12	(100 cycles de gel/ dégel)	Résistant / Résistant	
<b>Résistance aux acides et bases</b> Resistance to acids and bases		ISO 10545-13	Valeur déclarée (altérations visibles à l'attaque chimique) (A-B-C)	A	
<b>Résistance aux tâches</b> Resistance to staining		ISO 10545-14	Classe de (2 à 5)	4	
<b>Résistance au choc thermique</b> Thermal shock resistance		ISO 10545-9	Niveau de détérioration observé	Résistant / Résistant	











# SEL ET POIVRE SALT AND PEPPER

## CARACTÉRISTIQUES TECHNIQUES DE PRODUITS DU GRÈS NON ÉMAILLÉ SEL ET POIVRE (groupe BIa) ANNEXE G TECHNICAL DATA SHEET FOR UNGLAZED FLOOR TILE SALT AND PEPPER (GROUPE / GROUP BIa)

Séries / Series : Grès GEP-GEPP		Classe : U4P3E3C2		Émaillé (GL) Glazed (GL)	Non émaillé (UGL) Unglazed (UGL) 0
Propriété Physicochimiques Physicochemical Properties		Essais selon norme applicable Tests according to applicable standard	Valeur de la norme NF EN -14411 Standard Value NF EN -14411		Valeur Moyenne de SOMOCER Average Value of SOMOCER
DIMENSIONS ET QUALITÉ DE SURFACE					
Masse d'eau absorbée Water Absorption (%)		ISO 10545-3	Bl <sub>a</sub> E ≤ 0,5%		E ≤ 0,2%
Dimensions Dimensions		ISO 10545-2	Épaisseur ± 5%, max. 0,5mm		±3%
			Longueur et largeur ± 0,6%, max 2,0mm		±0,3%
			Rectitude des arrêtes ±0,5%, ±1,5mm		±0,3%
			Angulativité ±0,5%, ±2,0mm		±0,3%
			Courbature centrale ±0,5%, ±2,0mm		±0,3%
			Courbature latérale ±0,5%, ±2,0mm		±0,3%
			Voile (angle haut - angle bas) ±0,5%, ±2,0mm		±0,3%
Aspect de surface Surface quality		ISO 10545-2	95% min. exemptée par défauts Exempted by default		Conforme Compliant
Charge de rupture (N) Breaking strength (N)		ISO 10545-4	> 1300N ; > 35N/mm <sup>2</sup>		>1500 N ; > 40 N/mm <sup>2</sup>
Résistance à la flexion (N/mm <sup>2</sup> ) Bending strength (N/mm <sup>2</sup> )		ISO 10545-4	> 1300N ; > 35N/mm <sup>2</sup>		>1500 N ; > 40 N/mm <sup>2</sup>
Résistance à l'abrasion profonde Resistance to deep abrasion		ISO 10545-6	Max 175 mm <sup>3</sup>		L ≤ 32 mm, V ≤ 67 mm <sup>3</sup> CLASSE U4
Résistance au gel Frost resistance		ISO 10545-12	(100 cycles de gel/ dégel)		Résistant / Résistant
Résistance aux acides et bases Resistance to acids and bases		ISO 10545-13	Valeur déclarée (altérations visibles à l'attaque chimique) (A-B-C)		A
Résistance aux tâches Resistance to staining		ISO 10545-14	Classe de (2 à 5)		4
Résistance au choc thermique Thermal shock resistance		ISO 10545-9	Niveau de détérioration observé		Résistant / Résistant

# DOUBLE CHARGEMENT DOUBLE LOADING

## CARACTÉRISTIQUES TECHNIQUES DE PRODUITS DU GRÈS NON ÉMAILLÉ DOUBLE CHARGEMENT (groupe Bla) ANNEXE G TECHNICAL DATA SHEET FOR UNGLAZED FLOOR TILE DOUBLE LOADING (GROUPE / GROUP Bla)

Séries / Series : Grès GEDP		Classe : U4P3E3C2		Émaillé (GL) Glazed (GL)	Non émaillé (UGL) Unglazed (UGL) 0
Propriété Physicochimiques Physicochemical Properties		Essais selon norme applicable Tests according to applicable standard	Valeur de la norme NF EN -14411 Standard Value NF EN -14411		Valeur Moyenne de SOMOCER Average Value of SOMOCER
DIMENSIONS ET QUALITÉ DE SURFACE					
Masse d'eau absorbée Water Absorption (%)			ISO 10545-3	Bl <sub>3</sub> E ≤ 0,5%	E ≤ 0,2%
Dimensions Dimensions			ISO 10545-2	Épaisseur ± 5%, max. 0,5mm	±3%
				Longueur et largeur ± 0,6%, max 2,0mm	±0,3%
				Rectitude des arrêtes ±0,5%, ±1,5mm	±0,3%
				Angulativité ±0,5%, ±2,0mm	±0,3%
				Courbature centrale ±0,5%, ±2,0mm	±0,3%
				Courbature latérale ±0,5%, ±2,0mm	±0,3%
Voile (angle haut - angle bas) ±0,5%, ±2,0mm				±0,3%	±0,3%
Aspect de surface Surface quality			ISO 10545-2	95% min. exemptée par défauts Exempted by default	Conforme Compliant
Charge de rupture (N) Breaking strength (N)			ISO 10545-4	> 1300N ; > 35N/mm <sup>2</sup>	> 2000 N ; > 40 N/mm <sup>2</sup>
Résistance à la flexion (N/mm <sup>2</sup> ) Bending strength (N/mm <sup>2</sup> )					
Résistance à l'abrasion profonde Résistance to deep abrasion			ISO 10545-6	Max 175 mm <sup>3</sup>	L ≤ 32 mm, V ≤ 67 mm <sup>3</sup> CLASSE U4
Résistance au gel Frost resistance			ISO 10545-12	(100 cycles de gel/ dégel)	Résistant / Résistant
Résistance aux acides et bases Resistance to acids and bases			ISO 10545-13	Valeur déclarée (altérations visibles à l'attaque chimique) [A-B-C]	A
Résistance aux tâches Resistance to staining			ISO 10545-14	Classe de (2 à 5)	4
Résistance au choc thermique Thermal shock resistance			ISO 10545-9	Niveau de détérioration observé	Résistant / Résistant



**GRÈS TECHNIQUE**  
TECHNICAL SANDSTONE





# SOMOCER GROUP

Le LEADER Grès, Faïence, Sanitaire...



## SOMOCER

Menzel Hayet - Monastir 5033 - Tunisie

## SOTEMAIL

SIÈGE SOCIAL : Route de Sfax Menzel Hayet - Monastir 5033 - Tunisie

USINE : ZI, Souassi - Mahdia 5140 - Tunisie

**E** [contact@somocergroup.com](mailto:contact@somocergroup.com)

**T** (+216) 73 41 04 69 / (+216) 29 50 90 02 / (+216) 29 50 90 03

**F** (+216) 73 41 04 01 / (+216) 73 41 01 00



[www.somocergroup.com](http://www.somocergroup.com)